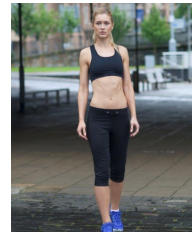
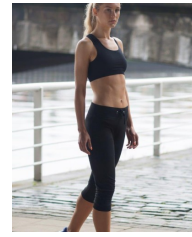
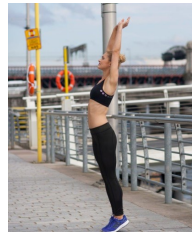
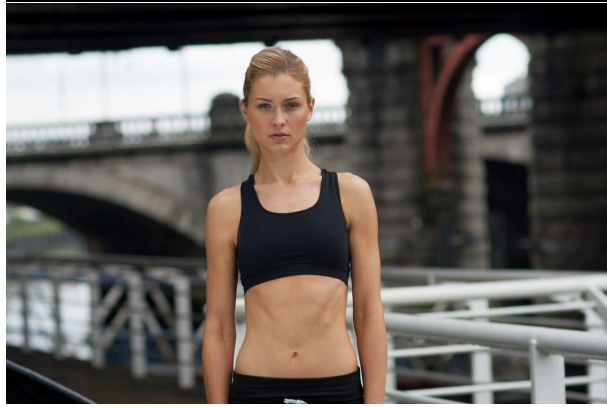




LADIES' WORKOUT CROPPED TOP

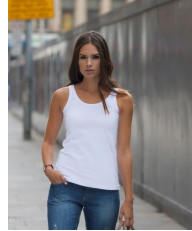
LADIES-WORK-OUT-CROPPED-TOP



Matches with:



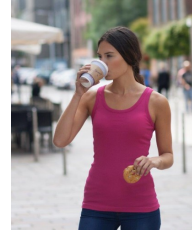
SK016



SK103



SK283



SK303

- Ladies' Fitted Crop Top
- Racer Back
- Removable SF (Skinnifit) Label - New, tearable
- Knitted fabric for stretch, comfortable close fit and shape retention
- Available in size XS ? L
- 65% Polyamide, 31% Polyester, 4% Elastane
- 280 gsm Double layer Interlock

- 65% Polyamide, 31% Polyester, 4% Elastane
- 280 gsm
- Wash at 40 degrees
- Wash dark colours together
- Re-Shape whilst damp
- Do Not Bleach
- Dry out of direct sunlight
- Tumble Dry on Medium Setting
- 2 Dot Iron
- Do Not Dry Clean
- Iron on reverse of motif if decorated

To Fit Sizes	XS	S	M	L
Chest inches	30"-32"	32"-34"	34"-36"	36"-38"
Chest cms	76-81	81-86	86-91	91-97

Garment Measurements	XS	S	M	L
Chest cms	29	32	35	37
length cms	29	31	33	34



BLACK