

PROACT.



REFERENCE : PA439

SIZES : XS_S_M_L_XL

COMPOSITION :

Main fabric : Polyester birdeyes 140 100%polyester

WEIGHT :

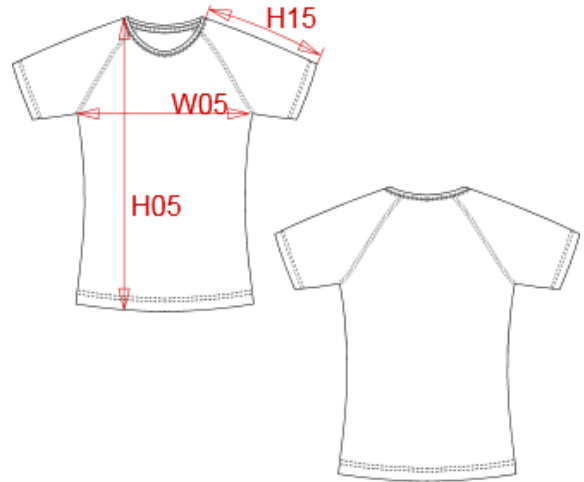
Main fabric : 140 gsm

FABRIC CONSTRUCTION AND FINISHING :

Quick dry fabric

ARTICLE WEIGHT :

100gr/pc



DESCRIPTION							
Français : T-shirt femme manches courtes							
English : Ladies short sleeve T-shirt							
Nederlands : Dames T-shirt met mouwen							
Deutsch : Polyester T-shirt für Damen							
Español : Camiseta de manga corta para mujer							
Italiano : T-shirt donna maniche corte							
Português : T-shirt de denhora de manga curta							

MEASUREMENT							
Description	XS	S	M	L	XL		
H05 Hauteur totale dvt / Front total height	63	64,50	66	68,25	70,50		
W05 1/2 largeur poitrine/1/2 chest width	43	45	47	50	53		
H15 Longueur dessus de manche +épaule / Outtter sleeve length + shoulder	25	26,50	28	30	32		

CARE LABEL				

PACKING	
Box	50 pcs / box XS=> L:45cm W:33cm H:19.5cm GW:5.60kg NW:4.60kg S=> L:47cm W:34cm H:19.5cm GW:5.70kg NW:4.70kg M=> L:49cm W:35cm H:19.5cm GW:6.00kg NW:5.00kg L=> L:52cm W:36cm H:19.5cm GW:6.50kg NW:5.50kg XL=> L:55cm W:38cm H:19.5cm GW:7.00kg NW:5.90kg

COLORS	PANTONE SERIGRAPHIE
White	White
Red	186C
Black	Black
Lime	367C
Orange	1585C
Aqua blue	7690C
Sand	4755C
Olive	7770C
Sky blue	283C
Fine grey	Cool gray 7C
True Yellow	116C
Violet	7672C
Dark pink	210C
Flourescent yellow	-
Flourescent orange	-
Flourescent pink	-
Navy	296C
Sporty royal blue	300C
Fuchsia	219C