

PROACT.



REFERENCE : PA233

SIZES : XS_S_M_L_XL_XXL_3XL

COMPOSITION :

Fabric 1 : Brushed Polyester / Elastane jersey 90/10 - 270 For back, sleeves, inside and outside collar and under front tab 90%polyester / 10%elastane

Main fabric : Nylon baby ripstop - 35 For front, facing pocket, collar yoke and back inside yoke 100%polyamide

Wad 1 : Polyfil 160 For inner fronts padded 100%polyester

Lining : Polyester 210T - 60 For inner front and pockets bag 100%polyester

WEIGHT :

Fabric 1 : 270 gsm

Main fabric : 35 gsm

Wad 1 : 160 gsm

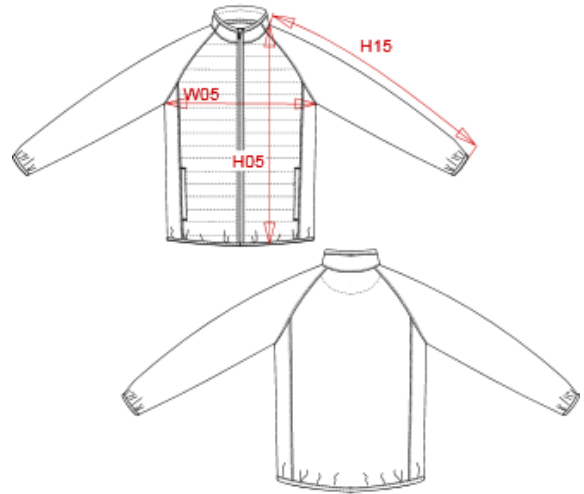
Lining : 60 gsm

FABRIC CONSTRUCTION AND FINISHING :

Water-repellent fabric 1 + 2

ARTICLE WEIGHT :

420 gr/pc



DESCRIPTION	
Français : Veste sport bi-matière	
English : Dual-fabric sports jacket	
Nederlands : Sportjas in twee stoffen	
Deutsch : Sportweste aus Bi-Material	
Español : Chaqueta de deporte de dos materiales	
Italiano : Giacca sportiva bimatériale	
Português : Casaco de desporto bi-matéria	

COLORS	PANTONE SERIGRAPHIE
Black / Black	Black / Black
Dark royal blue / Black	2146C / Black

MEASUREMENT							
Description	XS	S	M	L	XL	XXL	3XL
H05 Hauteur totale / Total height	66	68	70	72	74	76	78,75
W05 1/2 largeur poitrine / 1/2 chest width	46,50	49,50	52,50	55,50	58,50	61,50	65,50
H15 Longueur manche / Sleeve length	72,25	75	77,75	80,50	83,25	86	89,50

CARE LABEL				

PACKING	
Box	10 pcs / box All sizes => L:60cm W:40cm H:19cm GW:5.60kg NW:4.40kg