

# PROACT.®

REFERENCE : PA005

SIZES : XS\_S\_M\_L\_XL\_XXL

**COMPOSITION :**

Main fabric : Peached and Brushed Polyester / Elastane single jersey 88/12 - 200 88%polyester / 12%elastane

**WEIGHT :**

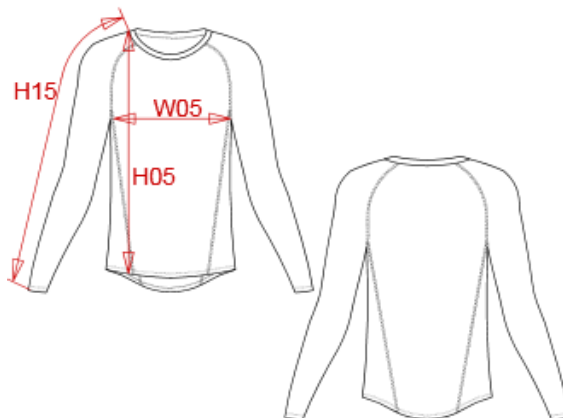
Main fabric : 200 gsm

**FABRIC CONSTRUCTION AND FINISHING :**

Quick dry fabric

**ARTICLE WEIGHT :**

192 gr/pc



DESCRIPTION								COLORS	PANTONE SERIGRAPHIE
<b>Français :</b> T-SHIRT DOUBLE PEAU SPORT MANCHES LONGUES UNISEXE								Black	Black
<b>English :</b> Long sleeve skin tight "Quick Dry" T-shirt								White	White
<b>Nederlands :</b> Thermoshirt lange mouwen								Sporty red	186C
<b>Deutsch :</b> LANGARM DOPPELHAUT T-SHIRT SCHNELLTROCKNEND								Sporty royal blue	300C
<b>Español :</b> Camiseta de manga larga doble piel "Quick Dry"								Orange	1585C
<b>Italiano :</b> T-SHIRT MANICHE LUNGHE QUICK DRY								Sky blue	283C
<b>Português :</b> T-shirt justa manga comprida "Quick Dry"								Green	7740C
MEASUREMENT								Sporty navy	295C
Description	XS	S	M	L	XL	XXL		Sporty yellow	123C
<b>H05</b> Hauteur totale devant / Front total height	62,10	64,20	66,30	68,40	70,50	73,60			
<b>W05</b> 1/2 largeur poitrine/1/2 chest width	37	40	43	46	49	53			
<b>H15</b> Longueur dessus de manche / Outtter sleeve length + shoulder	65,50	68,30	71,20	74	77	80,30			
CARE LABEL									
PACKING									
Box	25 pcs / box All sizes => L:37cm W:28cm H:26cm GW:5.80kg NW:5.00kg								