

KARIBAN

REFERENCE : K632

SIZES : S_M_L_XL_XXL_3XL_4XL

COMPOSITION :

Main fabric : Nylon 210T AC coating - 70 For dark colors only
100%polyamide

Main fabric : Nylon 210T milky coating 70 For light colors only
100%polyamide

Lining 1 : Polytricot lining 100%polyester

Mesh : Mesh 65 100%polyester

Lining 2 : Lining 210T For inner sleeves 100%polyester

WEIGHT :

Main fabric : 70 gsm

Main fabric : 70 gsm

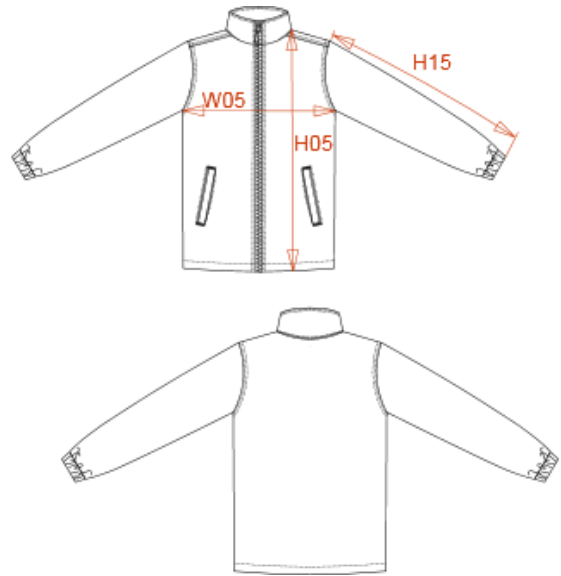
Lining 1 : 150 gsm

Mesh : 65 gsm

Lining 2 : 60 gsm

ARTICLE WEIGHT :

330 gr/pc



DESCRIPTION	
Français :	Coupe-vent doublé
English :	Lined windbreaker
Nederlands :	Gevoerde windbreaker
Deutsch :	Gefütterte windjacke
Español :	Cortaviento forrado
Italiano :	Giacca a vento foderata
Português :	Cortavento windbreaker

COLORS	PANTONE SERIGRAPHIE
Black	Black
Navy	296C
Red	200C

MEASUREMENT							
Description	S	M	L	XL	2XL	3XL	4XL
H05 Hauteur totale / Total height	77,15	79,15	81,15	83,15	85,90	88,65	90,65
W05 1/2 largeur poitrine / 1/2 chest width	58	61	64	67	71	75	78
H15 Longueur manche avec poignet / Sleeve length with cuff	64,15	66,05	68	69,90	72,05	74,15	76,10

CARE LABEL				

PACKING	
Box	25 pcs / box S-L => L:66cm W:46cm H:20cm GW:12.30kg NW:10.80kg XL-XXL => L:67cm W:48cm H:20cm GW:12.30kg NW:10.80kg 3XL => L:67cm W:48cm H:20cm GW:13.00kg NW:11.00kg 4XL => L:79cm W:56cm H:20cm GW:13.00kg NW:11.00kg