

KARIBAN

REFERENCE : K544

SIZES : XS_S_M_L_XL_XXL_3XL_4XL

COMPOSITION :

Main fabric : Cotton poplin - 120 For white color 100%cotton
Main fabric : Cotton poplin - 125 For colors 100%cotton

WEIGHT :

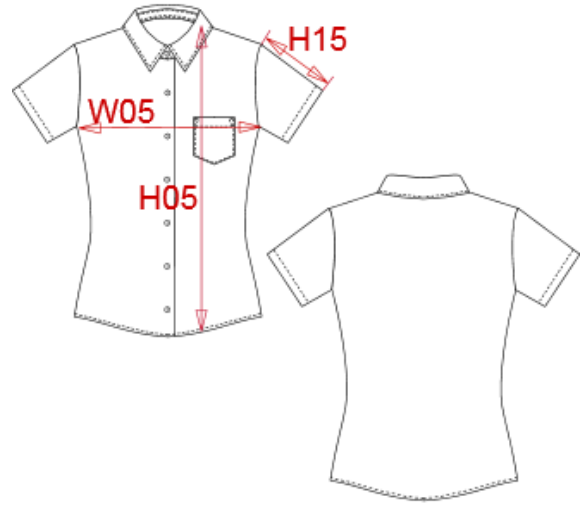
Main fabric : 120 gsm
Main fabric : 125 gsm

FABRIC CONSTRUCTION AND FINISHING :

Easy care

ARTICLE WEIGHT :

180 gr/pc



DESCRIPTION	
Français : Chemise femme manches courtes	
English : Ladies short sleeve easy care cotton poplin shirt	
Nederlands : Dames blouse met korte mouwen	
Deutsch : Pflegeleichte baumwolle popeline damen kurzarm bluse	
Español : Camisa de manga corta para mujer	
Italiano : Camicia donna maniche corte popeline	
Português : Camisa de senhora manga curta em popeline tratamento fácil	

COLORS	PANTONE SERIGRAPHIE
White	White
Black	Black
Navy	296C
Classic red	1945C
Zinc	447C
Bright sky	2708C

MEASUREMENT									
Description	XS	S	M	L	XL	2XL	3XL	4XL	
W05 1/2 largeur poitrine / 1/2 chest width	46	48	50	53	56	59	62	65	
H15 Longueur manche / Sleeve length	18,50	19,50	20,50	21,60	22,75	23,85	25	26,10	
H05 Hauteur totale dos / Back total height	62,65	64,20	65,75	67,70	69,60	71,55	73,45	75,40	

CARE LABEL				

PACKING	
Box	12 pcs / box XS => L:52cm W:34cm H:20cm GW:3.10kg NW:1.80kg S => L:52cm W:34cm H:20cm GW:3.20kg NW:1.90kg M => L:52cm W:34cm H:20cm GW:3.30kg NW:2.00kg L => L:52cm W:34cm H:20cm GW:3.40kg NW:2.10kg XL => L:52cm W:34cm H:20cm GW:3.50kg NW:2.20kg XXL => L:52cm W:34cm H:20cm GW:3.60kg NW:2.30kg 3XL => L:52cm W:34cm H:20cm GW:3.70kg NW:2.40kg 4XL => L:52cm W:34cm H:20cm GW:3.80kg NW:2.50kg