

# KARIBAN

**REFERENCE :** K536

**SIZES :** XS\_S\_M\_L\_XL\_XXL\_3XL\_4XL

**COMPOSITION :**

Main fabric : Cotton / Polyester oxford 70/30 - 130 For white color 70%cotton / 30%polyester

Main fabric : Cotton / Polyester oxford 70/30 - 135 For colors 70%cotton / 30%polyester

**WEIGHT :**

Main fabric : 130 gsm

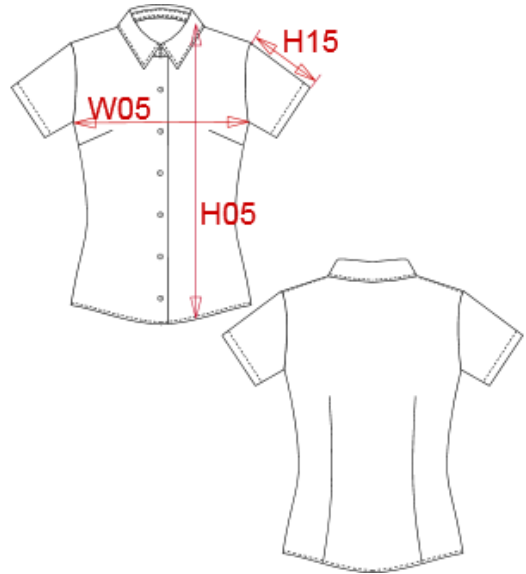
Main fabric : 135 gsm

**FABRIC CONSTRUCTION AND FINISHING :**

Wrinkle free finish

**ARTICLE WEIGHT :**

200 gr/pc



DESCRIPTION	
<b>Français :</b>	Chemise femme manches courtes
<b>English :</b>	Ladies short sleeve easy care oxford shirt
<b>Nederlands :</b>	Dames blouse met korte mouwen
<b>Deutsch :</b>	Pflegeleichte damen kurzarm oxford-bluse
<b>Español :</b>	Camisa de manga corta para mujer
<b>Italiano :</b>	Camicia oxford donna a maniche corte
<b>Português :</b>	Camisa de senhora manga curta em oxford tratamento fácil

COLORS	PANTONE SERIGRAPHIE
White	White
Oxford silver	-
Oxford blue	-

MEASUREMENT										
Description	XS	S	M	L	XL	2XL	3XL	4XL		
<b>W05</b> 1/2 largeur poitrine / 1/2 chest width	46	48	50	53	56	59	62	65		
<b>H15</b> Longueur manche / Sleeve length	18,50	19,50	20,50	21,60	22,75	23,85	25	26,10		
<b>H05</b> Hauteur totale dos / Back total height	62,75	64,30	65,85	67,75	69,70	71,65	73,55	75,50		

CARE LABEL				

PACKING	
Box	12 pcs / box XS => L:52cm W:34cm H:20cm GW:3.60kg NW:2.30kg S => L:52cm W:34cm H:20cm GW:3.70kg NW:2.40kg M => L:52cm W:34cm H:20cm GW:3.80kg NW:2.50kg L => L:52cm W:34cm H:20cm GW:3.90kg NW:2.60kg XL => L:52cm W:34cm H:20cm GW:4.00kg NW:2.70kg XXL => L:52cm W:34cm H:20cm GW:4.10kg NW:2.70kg 3XL => L:52cm W:34cm H:20cm GW:4.20kg NW:2.80kg 4XL => L:52cm W:34cm H:20cm GW:4.30kg NW:2.90kg