

# KARIBAN

**REFERENCE :** K478

**SIZES :** XS\_S\_M\_L\_XL\_XXL\_3XL\_4XL

**COMPOSITION :**

Main fabric : Brushed cotton / polyester fleece 80/20 - 280 80% cotton / 20%polyester

**WEIGHT :**

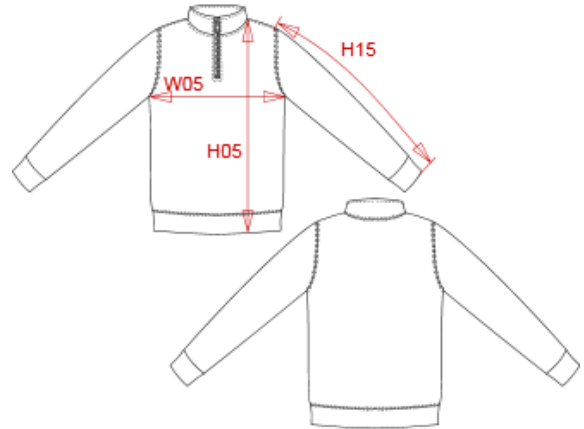
Main fabric : 280 gsm

**FABRIC CONSTRUCTION AND FINISHING :**

Tubular

**ARTICLE WEIGHT :**

425 gr/pc



DESCRIPTION										
<b>Français :</b> Sweat-shirt col zippé										
<b>English :</b> Zipped neck sweatshirt										
<b>Nederlands :</b> Sweater met ritshals										
<b>Deutsch :</b> Sweatshirt 1/4-Zip										
<b>Español :</b> Sudadera con cuello con cremallera										
<b>Italiano :</b> Felpa collo con zip										
<b>Português :</b> Sweatshirt com decote com fecho										

MEASUREMENT										
Description	XS	S	M	L	XL	2XL	3XL	4XL		
<b>H05</b> Hauteur totale avec BC / Total height with rib	64	66	68	70	72	74	76,75	78,80		
<b>W05</b> 1/2 largeur poitrine / 1/2 chest width	49	52	55	58	61	64	68	71		
<b>H15</b> Longueur manche avec BC / Sleeve length with rib	57	59	61	63	65	67	69	70,80		

COLORS	PANTONE SERIGRAPHIE
White	White
Black	Black
Navy	296C
Dark grey	432C
Oxford grey	-
Red	200C
Light royal blue	7685C
Yellow	1225C
Orange	1585C
Forest green	5605C

CARE LABEL				

PACKING	
Box	20 pcs / box XS-M => L:58.1cm W:37.8cm H:32cm GW:8.95kg NW:7.55kg L-4XL => L:58.1cm W:37.8cm H:42cm GW:11.15kg NW:9.55kg