

# KARIBAN

**REFERENCE :** K465

**SIZES :** XS\_S\_M\_L\_XL\_XXL

**COMPOSITION :**

Main fabric : Brushed Combed Cotton / Polyester fleece 80/20 - 280 80%cotton / 20%polyester

Fabric 1 : Cotton single jersey - 180 For hood lining, neckline property tape. 100%cotton

**WEIGHT :**

Main fabric : 280 gsm

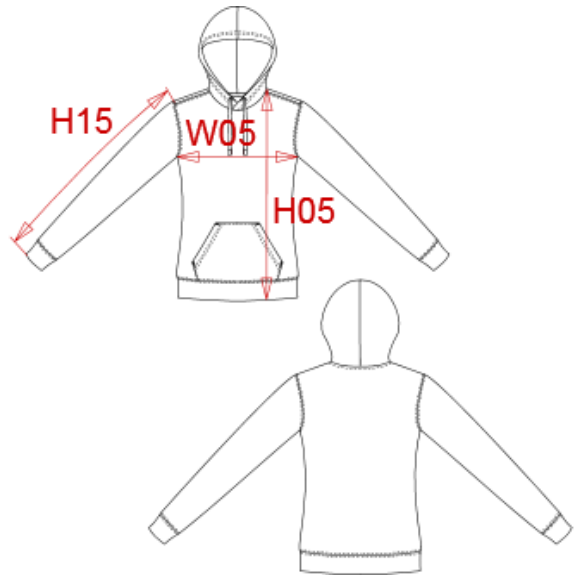
Fabric 1 : 180 gsm

**FABRIC CONSTRUCTION AND FINISHING :**

Regular

**ARTICLE WEIGHT :**

432 gr/pc



DESCRIPTION	
<b>Français :</b> Sweat-shirt capuche contrastée femme	
<b>English :</b> Ladies' contrast hooded sweatshirt	
<b>Nederlands :</b> Dameswearer met capuchon in contrasterende kleur	
<b>Deutsch :</b> Damen-Sweatshirt mit Kapuze in Kontrastfarbe	
<b>Español :</b> Sudadera con capucha contrastada para mujer	
<b>Italiano :</b> Felpa donna con cappuccio a contrasto	
<b>Português :</b> Sweatshirt de senhora com capuz em contraste	

COLORS	PANTONE SERIGRAPHIE
Red / White	200C / White
Black / Red	Black / 200C
Orange / White	1585C / White
Light kelly green / White	7482C / White
White / Fine grey	White / Cool gray 7C
Black / Yellow	Black / 1225C
Dark grey / Black	432C / Black
Light royal blue / Yellow	7685C / 1225C
Red / Yellow	200C / 1225C
Navy / Fine grey	296C / Cool gray 7C
Oxford grey / Navy	- / 296C
Black / Fine grey	Black / Cool gray 7C
Tropical blue / White	2185C / White
Navy / Red	296C / 200C

MEASUREMENT						
Description	XS	S	M	L	XL	XXL
<b>H05</b> Hauteur totale avec BC / Total height with rib	61,50	63	64,50	66	67,50	69,75
<b>W05</b> 1/2 largeur poitrine / 1/2 chest width	45	47	49	51	53	56
<b>H15</b> Longueur manche avec BC / Sleeve length with rib	61,50	62,50	63,50	64,50	65,50	66,75

CARE LABEL				

PACKING	
Box	20 pcs / box XS-S => L:58.1cm W:37.8cm H:32cm GW:9.4kg NW:8.3kg M-XXL => L:58.1cm W:37.8cm H:42cm GW:10.55kg NW:9.3kg