

KARIBAN

REFERENCE : K257

SIZES : XS_S_M_L_XL_XXL_3XL

COMPOSITION :

Main fabric : Ring spun Combed Cotton pique preshrunk - 180 100%cotton

Main fabric : Ring spun Combed Cotton/Viscose pique preshrunk 90/10 - 180 For heather colors 90%cotton / 10% viscose

WEIGHT :

Main fabric : 180 gsm

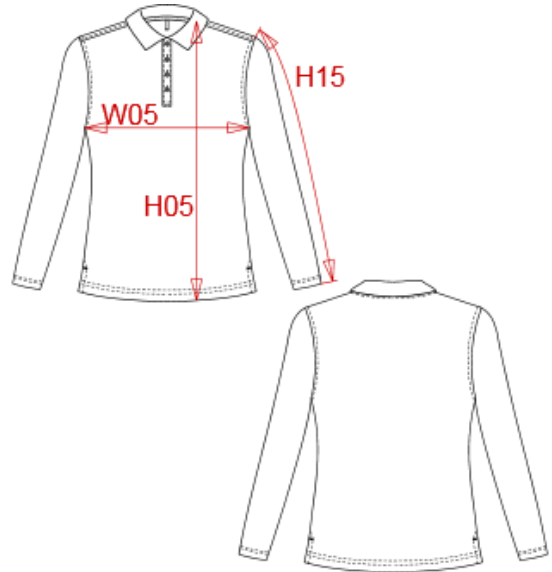
Main fabric : 180 gsm

FABRIC CONSTRUCTION AND FINISHING :

Preshrunk

ARTICLE WEIGHT :

195 gr/pc



DESCRIPTION	
Français :	Polo piqué manches longues femme
English :	Ladies' piqué long sleeve polo shirt
Nederlands :	Piqué-damespolo lange mouwen
Deutsch :	Damen Langarm-Polohemd. Baumwollpiqué
Español :	Polo piqué de manga larga para mujer
Italiano :	Polo piqué donna maniche lunghe
Português :	Polo piqué de senhora de manga comprida

COLORS	PANTONE SERIGRAPHIE
White	White
Black	Black
Navy	296C
Red	200C
Dark grey	432C
Oxford grey	-
Light royal blue	7685C
Orange	1585C
Yellow	1225C
Forest green	5605C

MEASUREMENT							
Description	XS	S	M	L	XL	XXL	3XL
H05 Hauteur totale / Total height	60,50	62	63,50	65	66,50	68,75	70,25
W05 1/2 largeur poitrine / 1/2 chest width	44	46	48	50	52	55	57
H15 Longueur manche / Sleeve length	59	60	61	62	63	64,50	65,50

CARE LABEL					

PACKING	
Box	40 pcs / box XS-S => L:47cm W:34cm H:28cm GW:10.63kg NW:9.60kg M-L => L:50cm W:34cm H:28cm GW:11.77kg NW:10.70kg XL-XXL => L:54cm W:36cm H:28cm GW:12.77kg NW:11.88kg 3XL => L:56cm W:38cm H:28cm GW:13.06kg NW:12.35kg