

KARIBAN

REFERENCE : K256

SIZES : S_M_L_XL_XXL_3XL_4XL

COMPOSITION :

Main fabric : Ring spun Combed Cotton pique preshrunk - 180 100%cotton

Main fabric : Ring spun Combed Cotton/Viscose pique preshrunk 90/10 - 180 For heather colors 90%cotton / 10% viscose

WEIGHT :

Main fabric : 180 gsm

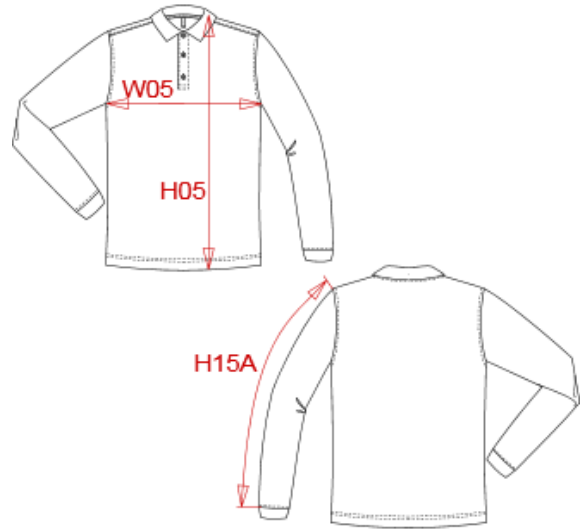
Main fabric : 180 gsm

FABRIC CONSTRUCTION AND FINISHING :

Preshrunk

ARTICLE WEIGHT :

280 gr/pc



DESCRIPTION							
Français : Polo piqué manches longues homme							
English : Men's piqué long sleeve polo shirt							
Nederlands : Piqué-herenpolo lange mouwen							
Deutsch : Herren Langarm-Polohemd. Baumwollpiqué							
Español : Polo piqué de manga larga para hombre							
Italiano : Polo piqué uomo maniche lunghe							
Português : Polo piqué de homem de manga comprida							

COLORS	PANTONE SERIGRAPHIE
White	White
Black	Black
Navy	296C
Red	200C
Dark grey	432C
Oxford grey	-
Light royal blue	7685C
Orange	1585C
Yellow	1225C
Forest green	5605C

MEASUREMENT							
Description	S	M	L	XL	XXL	3XL	4XL
H05 Hauteur totale / Total height	72,50	74,50	76,50	78,50	80,50	83,25	85,25
W05 1/2 largeur poitrine / 1/2 chest width	50	53	56	59	62	66	69
H15A Longueur manche sans poignet / Sleeve length without cuff	61	62	63	64	65	66,25	67,25

CARE LABEL					
		For solid colors	For heather colors		

PACKING	
Box	40 pcs / box S-M => L:53cm W:36cm H:28cm GW:14.06kg NW:12.90kg L-XL => L:55cm W:38cm H:28cm GW:15.74kg NW:14.50kg XXL-3XL => L:59cm W:40cm H:28cm GW:17.15kg NW:15.80kg 4XL => L:60cm W:40cm H:28cm GW:17.94kg NW:16.57kg