

# KARIBAN

**REFERENCE :** K255

**SIZES :** XS\_S\_M\_L\_XL\_XXL\_3XL

**COMPOSITION :**

Main fabric : Ring spun Combed Cotton pique preshrunk - 180 100%cotton

Main fabric : Ring spun Combed Cotton/Viscose pique preshrunk 90/10 - 180 For heather colors 90%cotton / 10% viscose

**WEIGHT :**

Main fabric : 180 gsm

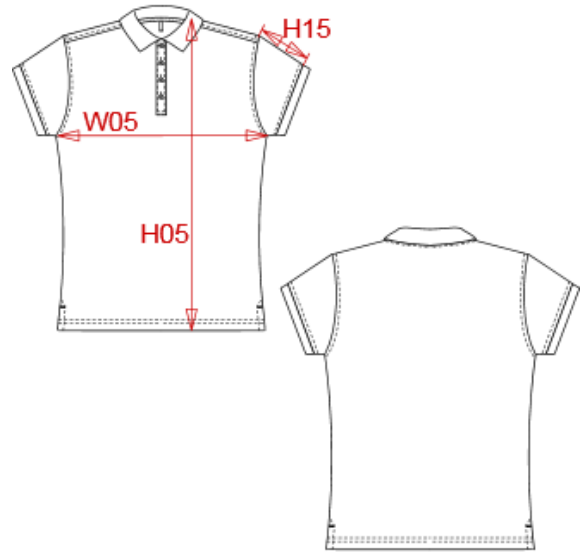
Main fabric : 180 gsm

**FABRIC CONSTRUCTION AND FINISHING :**

Preshrunk

**ARTICLE WEIGHT :**

168 gr/pc



DESCRIPTION	
<b>Français :</b>	Polo piqué manches courtes femme
<b>English :</b>	Ladies' piqué short sleeve polo shirt
<b>Nederlands :</b>	Piqué-damespolo korte mouwen
<b>Deutsch :</b>	Damen Kurzarm-Poloshirt. Baumwollpiqué
<b>Español :</b>	Polo piqué de manga corta para mujer
<b>Italiano :</b>	Polo piqué donna maniche corte
<b>Português :</b>	Polo piqué de senhora de manga curta

COLORS	PANTONE SERIGRAPHIE
White	White
Black	Black
Navy	296C
Red	200C
Dark grey	432C
Oxford grey	-
Light royal blue	7685C
Orange	1585C
Yellow	1225C
Forest green	5605C

MEASUREMENT							
Description	XS	S	M	L	XL	XXL	3XL
<b>H05</b> Hauteur totale / Total height	60,50	62	63,50	65	66,50	68,75	70,25
<b>W05</b> 1/2 largeur poitrine / 1/2 chest width	44	46	48	50	52	55	57
<b>H15</b> Longueur manche / Sleeve length	9,50	10,25	11	11,75	12,50	13,50	14,25

CARE LABEL					

PACKING	
Box	50 pcs / box XS-S => L:47cm W:34cm H:28cm GW:8.63kg NW:7.60kg M-L => L:50cm W:34cm H:28cm GW:9.57kg NW:8.50kg XL-XXL => L:54cm W:36cm H:28cm GW:10.67kg NW:9.50kg 3XL => L:56cm W:38cm H:28cm GW:11.50kg NW:10kg