

KARIBAN

REFERENCE : K254

SIZES : S_M_L_XL_XXL_3XL_4XL

COMPOSITION :

Main fabric : Ring spun Combed Cotton single pique preshrunk - 180 100%cotton

Main fabric : Ring spun Combed Cotton/Viscose pique preshrunk 90/10 - 180 For heather colors 90%cotton / 10% viscose

WEIGHT :

Main fabric : 180 gsm

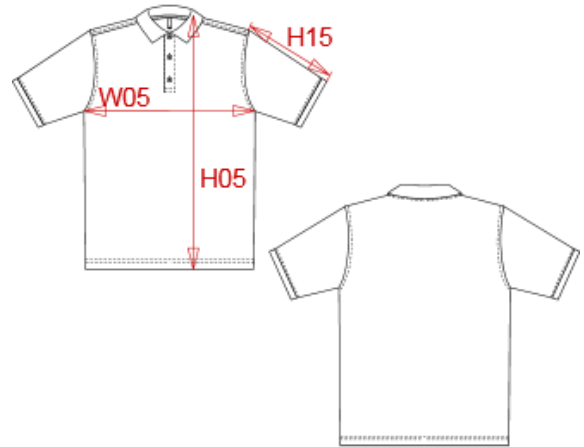
Main fabric : 180 gsm

FABRIC CONSTRUCTION AND FINISHING :

Preshrunk

ARTICLE WEIGHT :

215 gr/pc



DESCRIPTION	
Français :	Polo piqué manches courtes homme
English :	Men's piqué short sleeve polo shirt
Nederlands :	Piqué-herenpolo korte mouwen
Deutsch :	Herren Kurzarm-Polohemd. Baumwollpiqué.
Español :	Polo piqué de manga corta para hombre
Italiano :	Polo piqué uomo maniche corte
Português :	Polo piqué de homem de manga curta

COLORS	PANTONE SERIGRAPHIE
White	White
Black	Black
Navy	296C
Red	200C
Dark grey	432C
Oxford grey	-
Light royal blue	7685C
Orange	1585C
Yellow	1225C
Forest green	5605C

MEASUREMENT							
Description	S	M	L	XL	XXL	3XL	4XL
H05 Hauteur totale / Total height	72,50	74,50	76,50	78,50	80,50	83,25	85,25
W05 1/2 largeur poitrine / 1/2 chest width	50	53	56	59	62	66	69
H15 Longueur manche / Sleeve length	18	19	20	21	22	23,25	24,25

CARE LABEL					

PACKING	
Box	50 pcs / box S-M => L:53cm W:36cm H:28cm GW:12.06kg NW:10.90kg L-XL => L:55cm W:38cm H:28cm GW:13.74kg NW:12.50kg XXL-3XL => L:59cm W:40cm H:28cm GW:15.06kg NW:13.71kg 4XL => L:60cm W:40cm H:28cm GW:15.60kg NW:14.56kg