

# KARIBAN

**REFERENCE :** K250

**SIZES :** S\_M\_L\_XL\_XXL\_3XL

**COMPOSITION :**

Main fabric : Combed cotton single pique - 220 For solid colors  
100%cotton

Main fabric : Combed Cotton / Viscose single pique 90/10 - 220  
For heather colors 90%cotton / 10%viscose

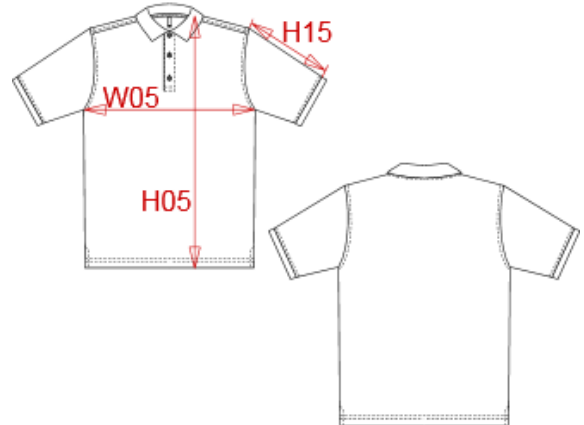
**WEIGHT :**

Main fabric : 220 gsm

Main fabric : 220 gsm

**ARTICLE WEIGHT :**

240 gr/pc



DESCRIPTION	
<b>Français :</b> Polo manches courtes homme	
<b>English :</b> Men's short sleeve polo shirt	
<b>Nederlands :</b> Heren piqué polo korte mouwen	
<b>Deutsch :</b> HERREN KURZARM PIQUE POLO	
<b>Español :</b> Polo piqué de manga corta para hombre	
<b>Italiano :</b> POLO UOMO MANICHE CORTE	
<b>Português :</b> Polo manga curta	

MEASUREMENT							
Description	S	M	L	XL	XXL	3XL	
<b>H05</b> Hauteur totale / Total height	70,50	72,50	74,50	76,50	78,50	81,25	
<b>W05</b> 1/2 largeur poitrine / 1/2 chest width	49	52	55	58	61	65	
<b>H15</b> Longueur manche / Sleeve length	18	19	20	21	22	23,25	

CARE LABEL	

PACKING	
Box	25 pcs / box S-M => L:55cm W:36cm H:16cm GW:7.30kg NW:6.00kg L-XL => L:60cm W:38cm H:16cm GW:7.80kg NW:6.80kg XXL-3XL => L:64cm W:40cm H:16cm GW:9.00kg NW:7.50kg

COLORS	PANTONE SERIGRAPHIE
White / Navy / Red	White / 296C / 200C
Navy / Red / White	296C / 200C / White
Black / Light grey / White	Black / 422C / White
Red / Navy / White	200C / 296C / White
Light royal blue / Red / White	7685C / 200C / White
Navy / Light grey / White	296C / 422C / White
Sky blue / Navy / White	278C / 296C / White
Oxford grey / Navy / White	- / 296C / White
Black / Red / White	Black / 200C / White
Light royal blue / Yellow / White	7685C / 1225C / White
Kelly green / Light grey / White	7727C / 422C / White
Red / Yellow / White	200C / 1225C / White
Navy / Wine / White	296C / 7645C / White
Black / Red / Yellow	Black / 200C / 1225C
White / Sky blue / Light grey	White / 278C / 422C